

MINI SIZE MAGNETIC LEVEL GAUGE SN SERIES

Technical Data

Application for non and low viscosity liquids system

In equipment for oil, food, beverages, medical, petrol chemical, water

Chamber size: 1" Pipe, SCH10

Connection size: ½" ~ 1"

Connection rating: Thread type: BSP(PF), NPT (with union) available. Special size on request.

Flange type: JIS, ANSI, DIN rating available. Special size on request.

Center to center length: Maximum 2 meters

Material: Chamber & Wetted parts—SS316 ; Indicating case—SS316

Indicating strips—Plastic

Indicating gauge orientation adjustable

Pressure limited: 10 kg/cm² (150psi)

Temperature limited: -20°C~+150°C

Sp.Gr.: 0.75 Low limited

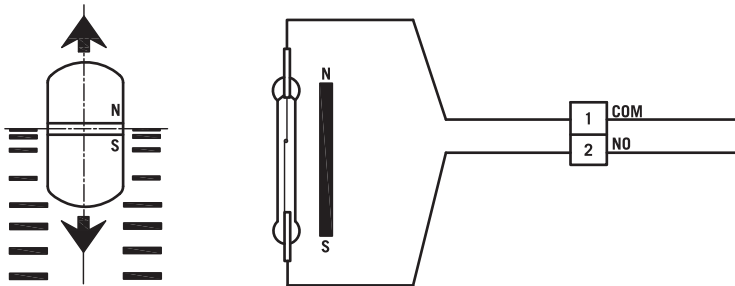
Reed switch type and transmitter assembly available

Switch Function

Reed Switch Type (SPST)

Alarm Switch: form A N.O. type bistable switch

Rating: AC 125V 0.5A /DC 100V 10W / Max. DC 250V < 10mA



Transmitter Type

Potentiometer I/P

Output Signals: 4~20mA DC,

Load resistance R_L (max)=(V_s-10)x50Ω (2-Wire)

Input Range: 100Ω to 45KΩ (3-Wire)

Output Adjustment Range: Zero adjustment 0~15%

Accuracy: ±0.1% F.S (at 23°C)

Linearity: ±0.1% F.S

Supply Voltage: 10~30V DC

Temp. Coefficient: ±0.02%/°C

Operating Temp.: -5 ~ +70°C

Operating Humidity: 0~90% RH

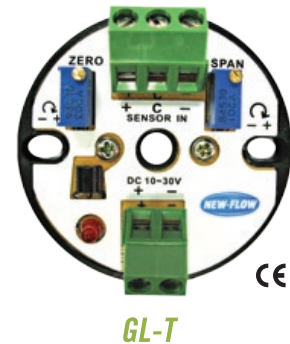
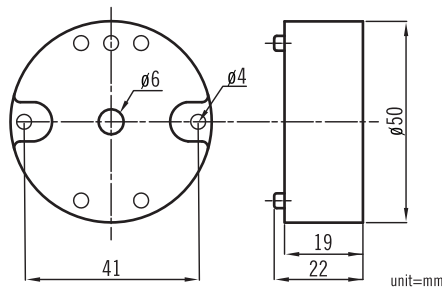
Terminal: DIN type

Installation: Head and wall mounting

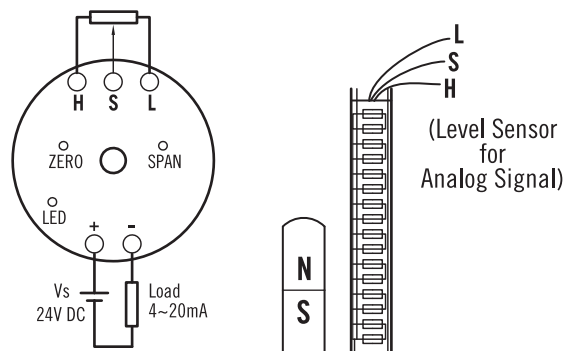
Case Material: Nylon 6 resin (Black)

Weight: about 50 grams

Dimensions



Sketch Terminal & Level Indicating Strip



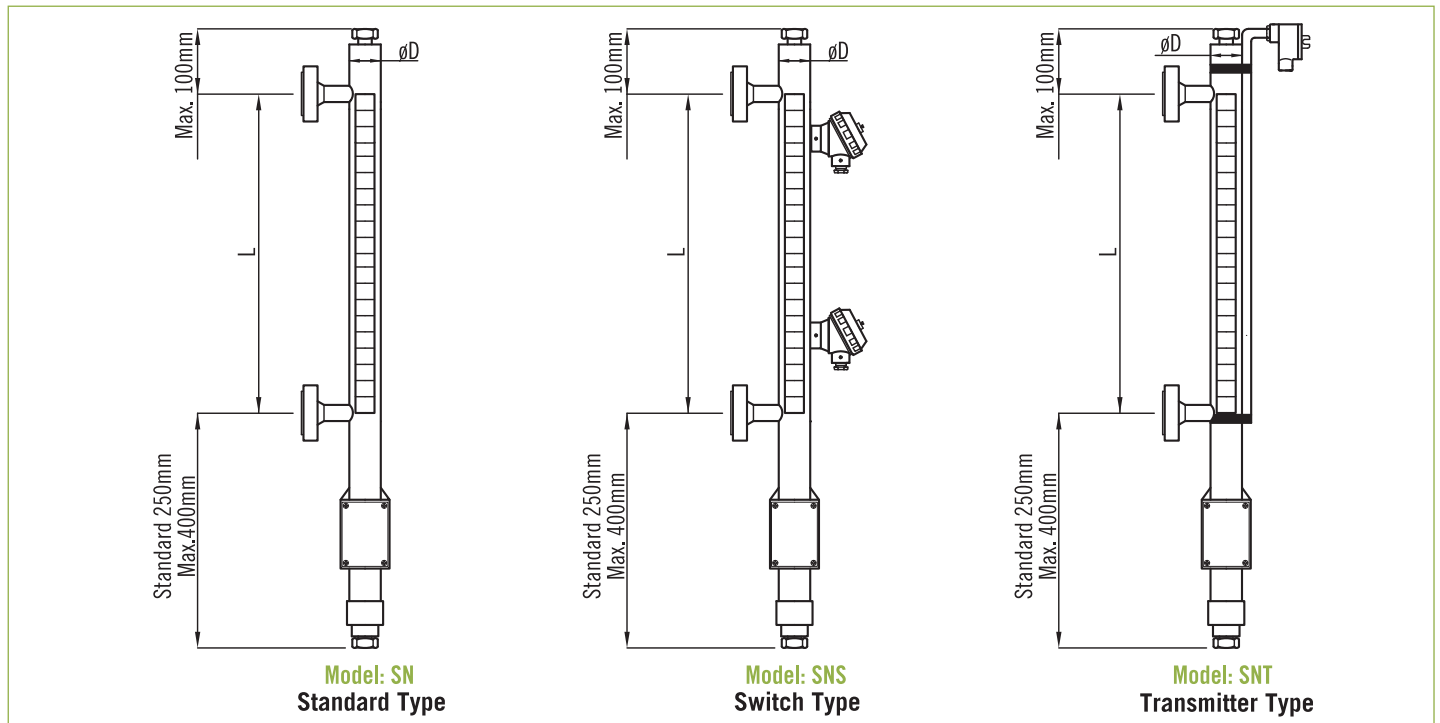
Features

- ISO 9001 and CE certificate
- High immunity to external noise
- LED indication and DC power polarity protection
- High reliability, lasting durability and low cost

Application

- Position of valve, damper and other devices

SN Standard Type—Side Mounting Series



Model: SN
Standard Type

Model: SNS
Switch Type

Model: SNT
Transmitter Type

Ordering Information

SN Type	Code	Model	Code	Transmitter Type													
	SN	Standard type	SNS	Switch type	SNT	Transmitter Type	(1) 4~20mA Transmitter (0) without										
	Code	Connection				Code	Scale Plate										
	A	1/2"	B	3/4"	C	1"	O	Option	A	Yes							
		Code Connection Rating							B	Without							
		Thread type	(1) BSPM (2) NPTM							Code Switch or Transmitter Housing							
		Flange type	(3) JIS 10K (4) ANSI 150# (5) PN16							1	Weather proof IP65						
		(T) other: _____								2	Explosion proof						
		Code	Material of Wetted Parts							Code	Specific Gravity						
		S	SS316	0	Option					Please directly fill out the Sp. Gr. in the of liquid order code.							
		Code	Material of Indicating Case							Code	Setting Point & Switch Acting Functions						
		S	SS316							Please fill in the requested length and float rised ↑ ON or fall down ↓ ON							
		Code	Material of Indicating Strips							ℓ1= _____ mm <input type="checkbox"/> ON ℓ2= _____ mm <input type="checkbox"/> ON ℓ3= _____ mm <input type="checkbox"/> ON ℓ4= _____ mm <input type="checkbox"/> ON							
		A	Plastic														
		Code	Switch Type														
		0	Without Switch														
		1	Reed Switch														
		2	Option														
			Code	Switch Point													
			A	1													
			B	2													
			C	3													
			D	4													
			O	without													
SN Type									+								Complete Ordering Code