

# FILLED TYPE THERMOMETERS W/MICRO SWITCH

## SHE4/SHE4-QS(Ø100) & SHE6/SHE6-QS(Ø150)

### Technical Data

**Direct Mounting**

**Liquid Gas Filled Available**

**Dial Size:** Ø100, Ø150 available

**Material of Case & Cover:** 316 stainless steel

**Material of Stem:** 316 stainless steel

**Lens:** Glass, Safety glass available

**Housing Enclosure:** IP65, liquid filled available

**Range Limit:** -50°C to 600°C

**Stem Dimensions:** Ø6, 8, 10, 12mm available

**Stem Length Limit:** 65~1000mm, option available

**Inner Zero Adjustable**

**Accuracy:** Gauge Indication: ±1% F.S.; Switch Acting Differential: ±1.6~3% F.S

**Process Connection:** ½"NPT standard, other available

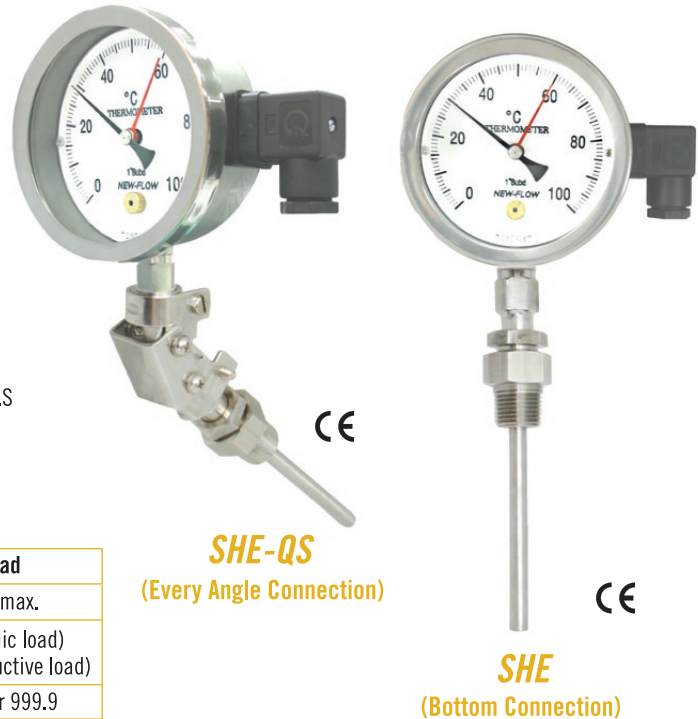
**Over Range Protection:** 130% F.S

**Switch Form:** One setting point SPDT x 1 or Two setting point SPDT x 2

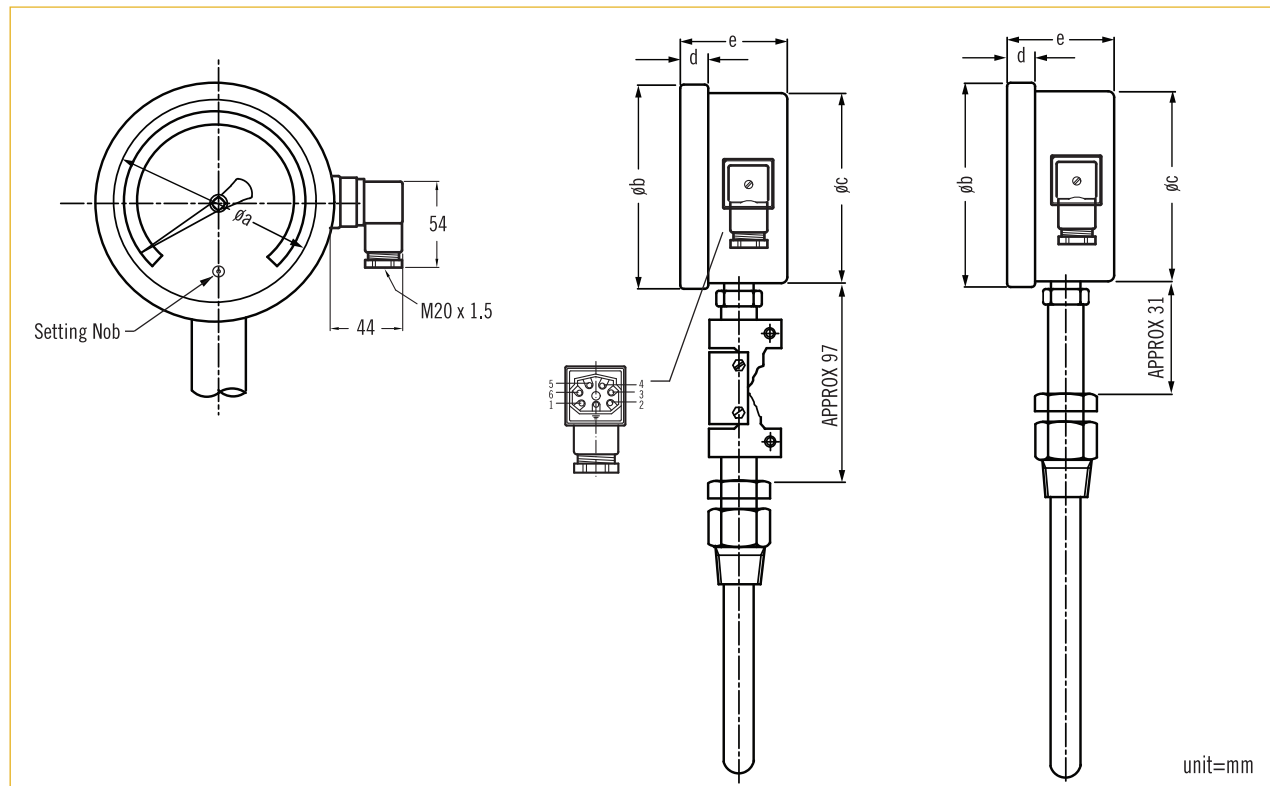
**Set Point:** Full scale range available

**Switch Data:**

	AC Load	DC Load
Nominal Operating Voltage	250 VAC max.	28 VDC max.
Current	5A max.	5A max. (ohmic load) 3A max. (inductive load)
Contact Material	Pure silver 999.9	Pure silver 999.9
Ambient Temperature	-20°C ~ +70°C	-20°C ~ +70°C



### Dimensions



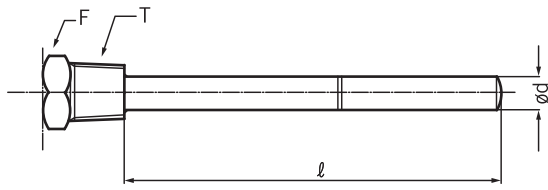
	a	b	c	d	e
SHE4 SHE4-QS	94	113	102	13	54
SHE6 SHE6-QS	140	165	153	15	54

#### NOTE

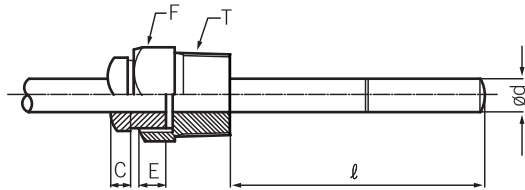
Performance Technical Data are effective with date of issue and are subject to change without prior notice.

\*Sensor bulb and connection, consult to factory .

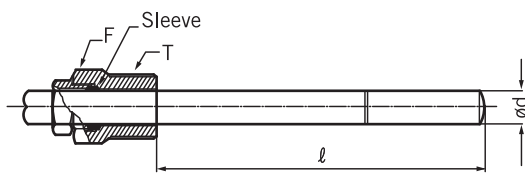
## Connection Type



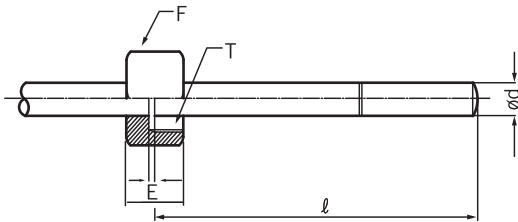
(A) Fixed Thread Type



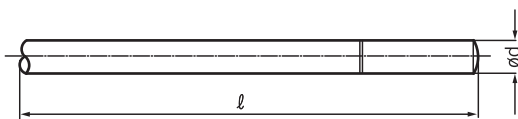
(B) Rotary Thread Type



(C) Slide Thread Type  
(Length "l" changed available.)



(D) Female Thread Type  
(Rotation Style)



(E) Non Thread Type

T: Process connection  
E: Stop plate for (rotary & rotation style)  
F: Hexagonal head  
l: Sensor length  
d: Sensor dimension

## Table for Range and Insertion

LIQUID FILLED TYPE						
Standard Scale Range (°C)	Minor Division (°C)		Minimum Insertion Length (mm)			
			Outer Diameter of Stem			
	Ø100	Ø150	Ø6	Ø8	Ø10	Ø12
-30~+50	1	1	135	91	53	37
-30~+100	2	2	89	61	38	28
-10~+50	1	1	175	116	66	45
-10~+100	2	2	102	70	42	31
0~50	1	1	207	137	76	52
0~80	1	1	135	91	53	37
0~100	1	1	111	75	45	33
0~120	2	2	95	65	40	29
0~150	2	2	79	55	34	26
0~200	2	2	63	44	29	23
0~250	5	5	53	38	26	21
0~300	5	5	47	34	24	20
0~400	5	5	39	29	21	18

GAS FILLED TYPE		
Standard Scale Range (°C)	Minor Division (°C)	
	Ø100	Ø150
-200~+50	5	5
-200~+100	5	5
-200~+150	5	5
-200~+200	5	5
-100~+100	2	2
-100~+150	5	5
-100~+200	5	5
-50~+300	5	5
-50~+400	5	5
-50~+500	10	10
-50~+600	10	10
0~400	5	5
0~500	10	10
0~600	10	10

Minimum Stem Length		
mm	Ød	Ø12
Minimum length	270	200

### OPTION.

1. Please note the minimum insertion length is not including the thread.
2. Special Range / Scale / Stem Diameter / Length are available upon request.

**Ordering Information**

Model	SHE4(∅100)	SHE6(∅150)	SHE4-QS(∅100)	SHE6-QS(∅150)	
Code	Lens Material				
	G	Glass	S	Safety Glass	
Code	Connection Type				
	A	Fixed Thread Type	C	Slide Thread Type	E
B	Rotary Thread Type	D	Female Thread Type	0	Option
Code	Stem Diameter				
	(1) ∅6 (2) ∅8 (3)∅10 (4)∅12				
Code	Stem Length				
	Refer to the Table for Range and Insertion, directly fill in request length(mm)				
Code	Process Connection				
	(A) 3/8" NPT (B) 1/2" NPT (C) 1/4" NPT (D) 3/8"PF (E) 1/2"PF (F)1/4"PF (O) Option				
Code	Scale Range				
	Refer to the Scale Range Table. Fill in the request range.				
Code	Micro Switch				
1	One setting point SPDT x 1	2	Two setting point SPDT x 2		
<div style="border: 1px solid black; display: flex; width: 100%; height: 20px; margin-top: 10px;"></div>					
					<b>Complete ordering code</b>

Ordering information Sample:

Model	Lens Material	Connection Type	Stem Diameter	Stem Length	Process Connection	Scale Range	Micro Switch
SHE4-QS	S	A	∅6	100mm	B	0-100°C	1