

# VACUUM SWITCH EXPLOSION PROOF TYPE

## PS1000X

**CLASS I, GROUPS A, B, C, D;**  
**CLASS II, GROUPS E, F, G; NEMA 4X**  
**Proof Pressure to 1000 psi**  
**Adjustable Range: -25 ~ -760 mmHg**  
**Temperature: -5°C ~ +150°C**

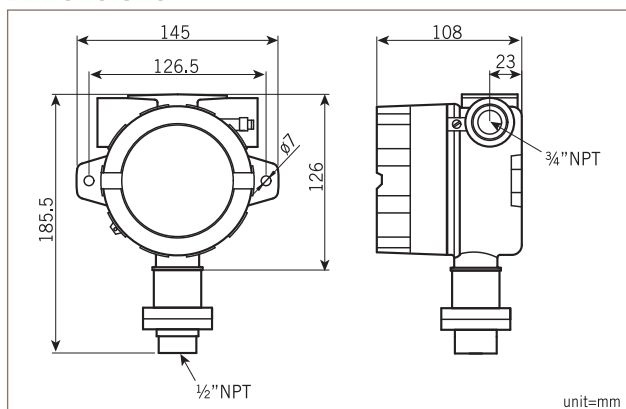
The New-flow PS1000X, an explosion proof vacuum switch, is designed to be used in control systems. PS1000X has high set point repeatability and narrow dead band features. Easily adjusted to the set point, no special tools needed!



### Technical data

**Switch Data:** One SPDT Microswitch  
 15amps 125/250VAC, Gold Contact Microswitch 1A 125/250VAC  
**Housing:** die cast aluminum alloy with paint  
**Conduit Connection:** 3/4" or 1/2" NPT Female  
**Pressure Element:** Diaphragm  
**Process Materials:** Wetted parts-SS316; O-ring- Viton  
**Process Connection:** 1/2" or 1/4" NPT Female and BSP Female available

### Dimensions



### Range Table

Code	Adjustable Range	Dead Band	Maximum Pressure Proof
1R	-25 ~ -760 mmHg	10 ~ 20 mmHg	1000 psi

### Ordering Information

PS1000X	Code	Range		
	1R	-25 ~ -760 mmHg		
		<b>Code</b>	<b>Wetted Material</b>	
		A	SS316	
		<b>Code</b>	<b>Process Connection</b>	
			(1) 1/2" NPT Female (2) 1/4" NPT Female (3) 1/2" BSP Female (4) 1/4" BSP Female	
		<b>Code</b>	<b>Conduit Connection</b>	
			(E) 3/4" NPT Female, standard (F) 1/2" NPT Female	
		<b>Code</b>	<b>Switch Form</b>	
		1	One SPDT	
PS1000X				Complete Ordering Code