

FLANGE TYPE THERMOWELLS

Technical Data

Welded type: WSF, WLF

Drilled bar stock type: BSF, BLF, BTF, BTLF, BPSF, BPLF

Material: SS304, SS316, SS316L, Monel, Hastelloy C 276, Brass, Carbon Steel, Titanium (special material available upon request)

Process connection: 1/2" ~ 4" flange available, flange rating—ANSI, DIN, JIS available (special flange upon request)

Instrument connection: 1/2" NPT, 3/4" NPT Female available (special thread upon request)

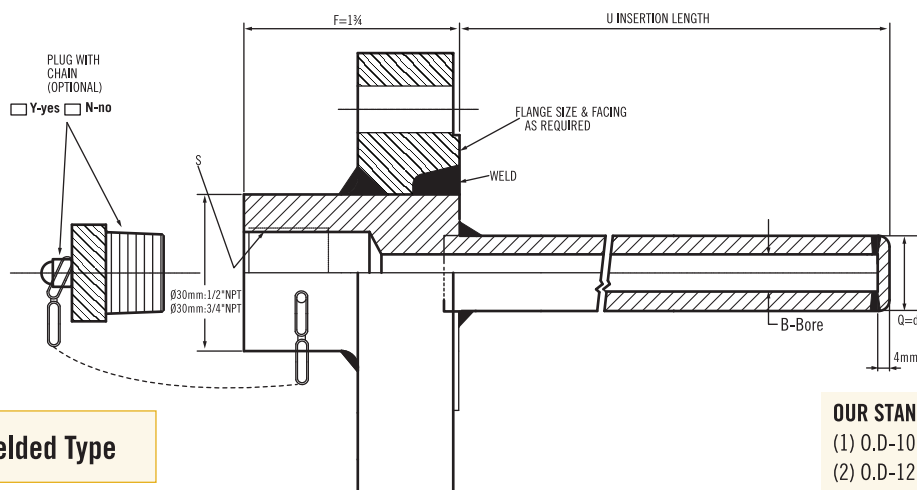


Flange Wells Series

* F: Length is suitable for flange size 3/4", 1", 1 1/2", 2", and flange rating 150# & 300#.

Other size and rating (F) length is by makers standard.

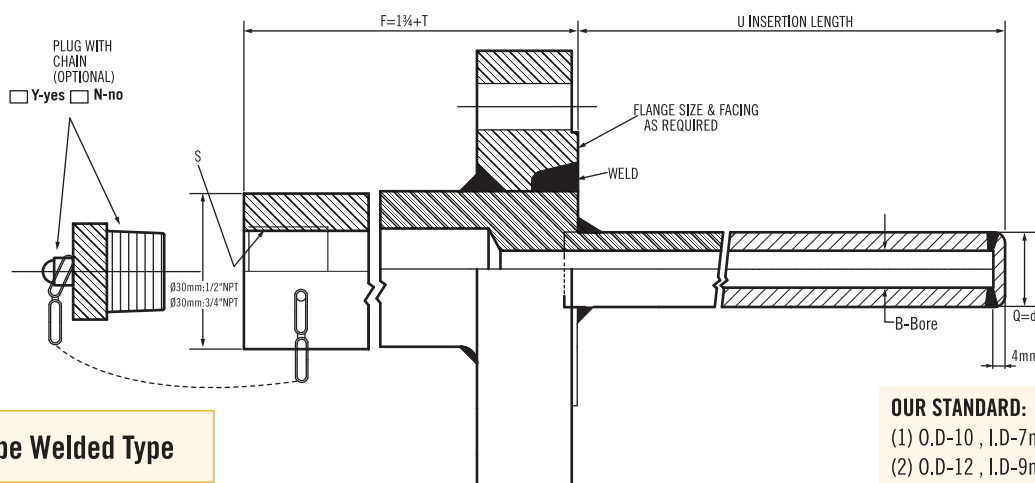
Model : WSF(Welded Standard Flange Type)



Tube Welded Type

OUR STANDARD:
 (1) O.D-10 , I.D-7mm
 (2) O.D-12 , I.D-9mm
 (3) O.D-14 , I.D-10mm
No custom request for this type!

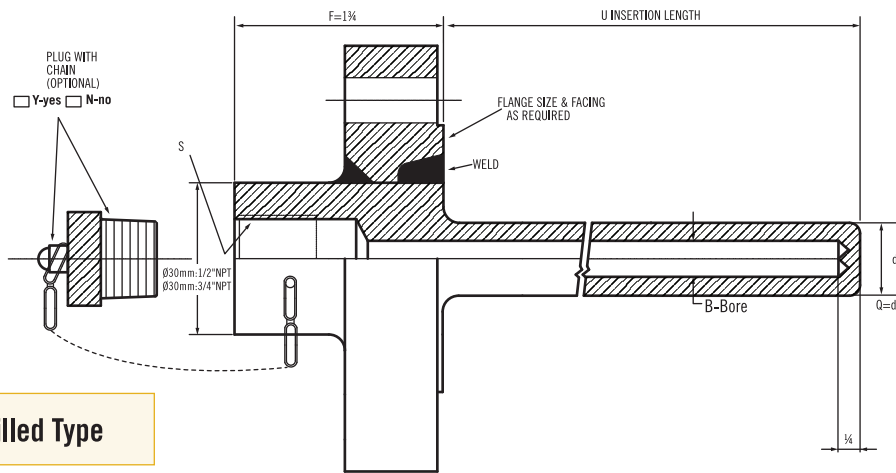
Model : WLF(Welded Lag Flange Type)



Tube Welded Type

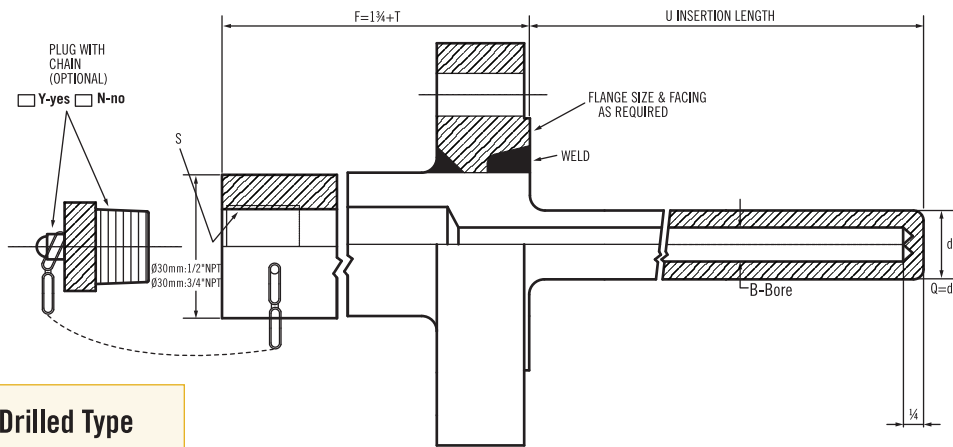
OUR STANDARD:
 (1) O.D-10 , I.D-7mm
 (2) O.D-12 , I.D-9mm
 (3) O.D-14 , I.D-10mm
No custom request for this type!

Model : BSF(Straight Standard Flange Type)



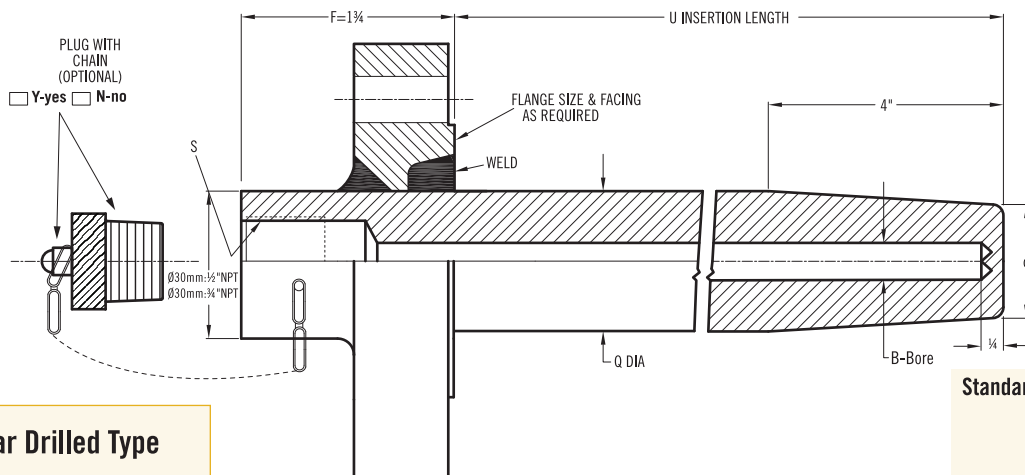
Bar Drilled Type

Model : BLF(Straight Lag Extension Flange Type)



Bar Drilled Type

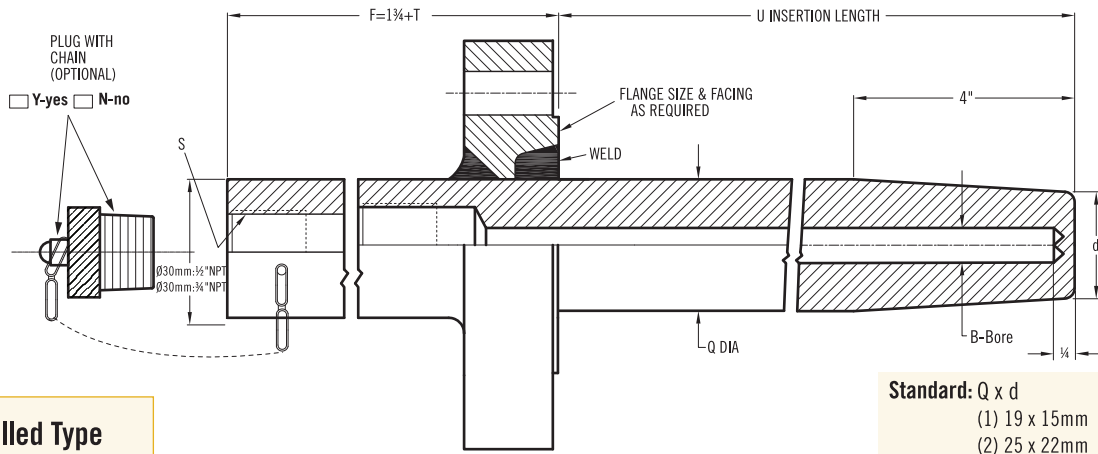
Model : BTF(Tapered Standard Flange Type)



Bar Drilled Type

- Standard: Q x d
- (1) 19 x 15mm
 - (2) 25 x 22mm
 - (3) 22 x 19mm

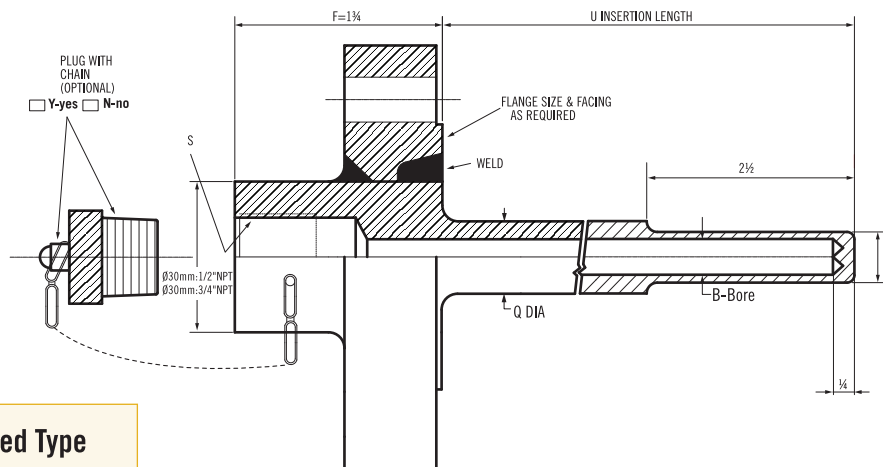
Model : BTLF(Tapered Lag Extension Flange Type)



Bar Drilled Type

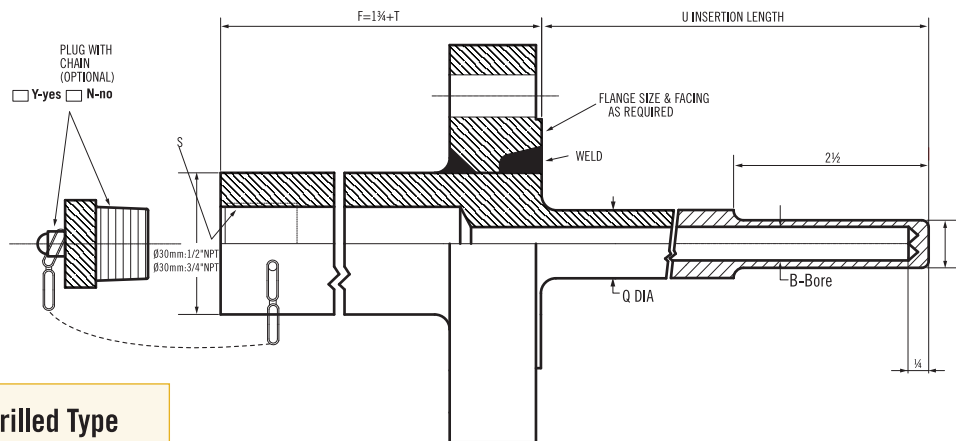
Standard: Q x d
 (1) 19 x 15mm
 (2) 25 x 22mm
 (3) 22 x 19mm

Model : BPSF(Stepped Standard Flange Type)



Bar Drilled Type

Model : BPLF(Stepped Lag Extension Flange Type)



Bar Drilled Type

Ordering Information

| Model | Configuration Style | | | | | | | | | | |
|---|--|---|-----|---------------------------------|-------|-----------------------------------|------|--------|--|---|-------------------------------|
| | WSF | WLF | BSF | BLF | BTF | BTLF | BPSF | BPLF | | | |
| <div style="display: flex; justify-content: space-between; align-items: center;"> <div style="width: 10%; text-align: center;">↓</div> <div style="width: 10%; text-align: center;">↓</div> <div style="width: 10%; text-align: center;">↓</div> <div style="width: 10%; text-align: center;">↓</div> <div style="width: 10%; text-align: center;">↓</div> <div style="width: 10%; text-align: center;">↓</div> <div style="width: 10%; text-align: center;">↓</div> <div style="width: 10%; text-align: center;">↓</div> <div style="width: 10%; text-align: center;">↓</div> <div style="width: 10%; text-align: center;">↓</div> <div style="width: 10%; text-align: center;">↓</div> </div> | Code | Material | | | | | | | | | |
| | CS | Carbon Steel | | | MO | Monel | | | | | |
| | S1 | 304 Stainless Steel | | | HC | Hastelloy C276 | | | | | |
| | S2 | 316 Stainless Steel | | | Ti | Titanium | | | | | |
| | S3 | 316L Stainless Steel | | | OP | Option (please indicate material) | | | | | |
| | Code | Process Flange Size | | | | | | | | | |
| | | (1) ½" (2) ¾" (3) 1" (4) 1½" (5) 2" (6) 2½" (7) 3" (8) 4" (9) option (please indicate size) | | | | | | | | | |
| | Code | Flange Rating | | | | | | | | | |
| | A | 150# | | E | 1500# | | I | PN25 | | M | JIS20K |
| | B | 300# | | F | 2500# | | J | PN40 | | O | option |
| | C | 600# | | G | PN10 | | K | JIS5K | | | |
| | D | 900# | | H | PN16 | | L | JIS10K | | | |
| | Code | S-Instrument Connection | | | | | | | | | |
| | | (A) ½"NPT Female (B) ¾"NPT Female (O) option | | | | | | | | | |
| | Code | Lag Length "T" | | | | | | | | | |
| No | 0 | | T6 | 6" | | | | | | | |
| T3 | 3" | | Tn | option (please indicate length) | | | | | | | |
| Code | "Q" Diameter (mm) | | | | | | | | | | |
| | Please directly fill in the required diameter. | | | | | | | | | | |
| Code | "d" Diameter (mm) | | | | | | | | | | |
| | Please directly fill in the required diameter. | | | | | | | | | | |
| Code | "B" BORE diameter | | | | | | | | | | |
| | (1) ∅6 (2) ∅7 (3) ∅8 (4) ∅9 (5) ∅10 (O) option | | | | | | | | | | |
| Code | "U" Insertion Length | | | | | | | | | | |
| | Fill in the requested length: e.g. 300mm=300u | | | | | | | | | | |
| Code | Plug with Chain | | | | | | | | | | |
| Y | Yes | | | | | | | | | | |
| N | No | | | | | | | | | | |
| | | | | | | | | | | | Complete Ordering Code |